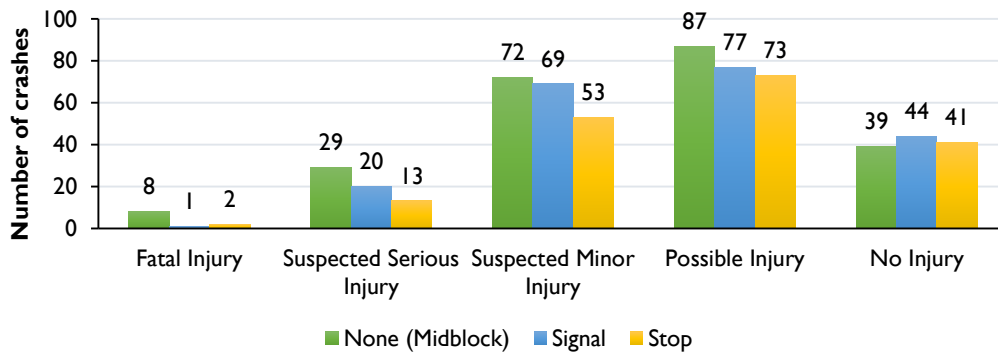


Additional/Clarification Analysis

- Injuries and fatalities:** Do the mid-block passing or the stop sign/light crashes more often result in serious injuries or fatalities?

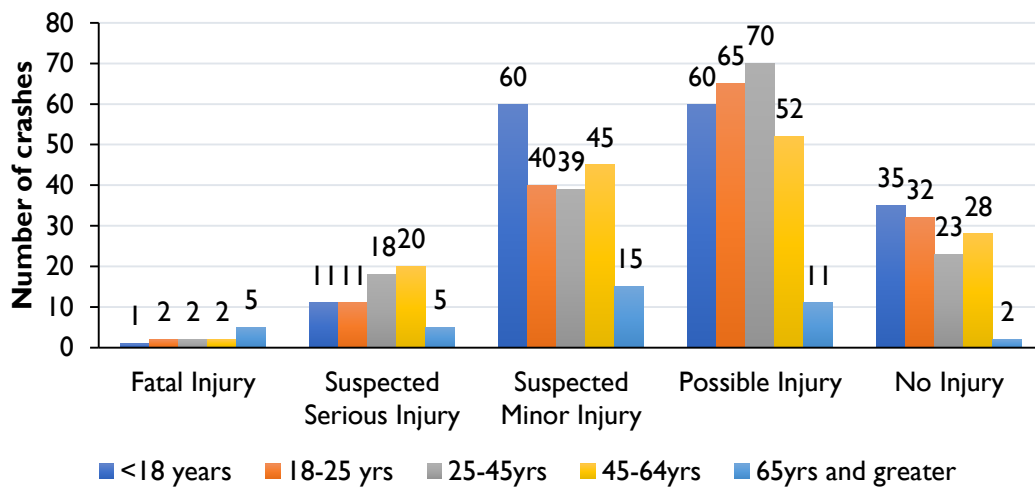
**Bicycle Crashes in Kalamazoo County
Bicyclist Injury Severity by location**



- Midblock areas in general had more fatal and serious injuries when compared to stop-controlled or signal-controlled intersections individually.

- Age of bicyclists:** Data suggests that those under 25 are much more likely to be involved in a crash — can we determine if this is children (under 18) or young adults?

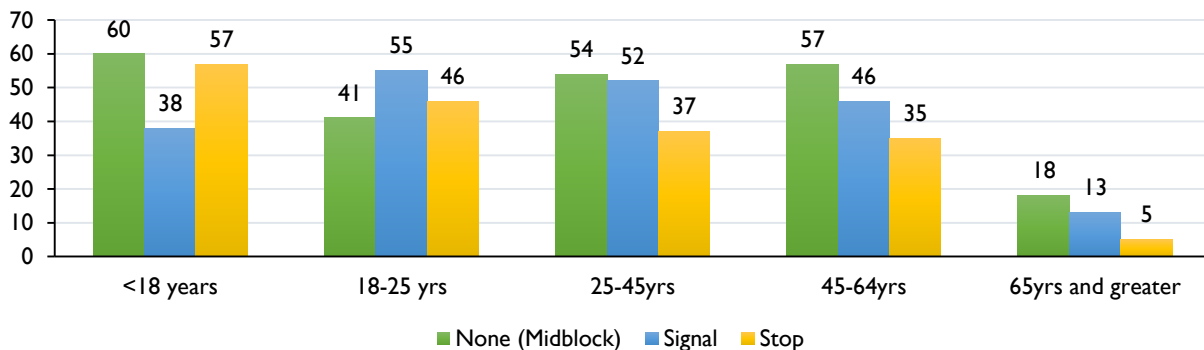
**Bicycle Crashes in Kalamazoo County
Injury Severity by age**



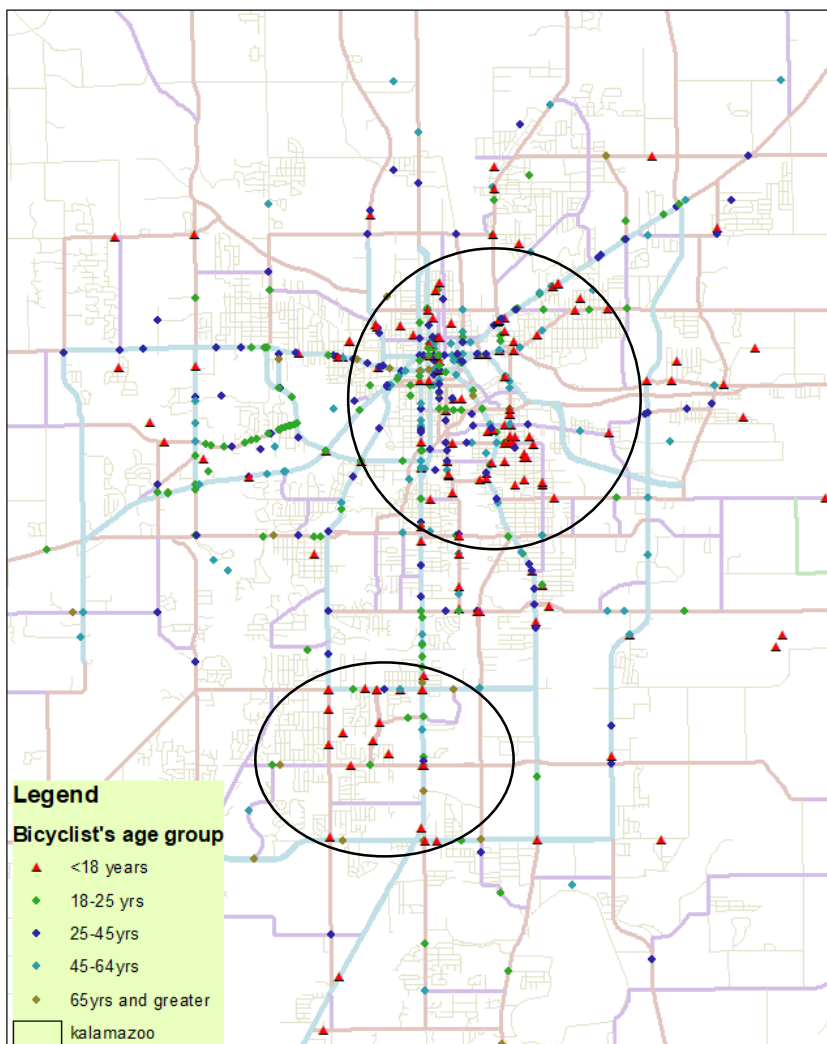
- Yes, they were children (under 18) (total of 167 crashes) compared to 18-25 (total of 150 crashes).

- Location:** Where are these types of crashes happening? Side streets feeding major arterial roads near/in downtown Kalamazoo?

Bicycle Crashes in Kalamazoo County Crash location



- Under 18 bicyclists had crashes mostly at midblock (60 crashes) and at stop-sign intersections (57 crashes).



- The under 18 bicycle crashes mostly occurred near downtown Kalamazoo and just south of Portage Northern High School.