

WELCOME!

**“Connecting & Building
Communities”**

**Local Bicycling
Developments – 2020 &
Beyond**

Via Web Video Conference

May 13, 2019

Agenda

- Welcome & Overview
- KATS Update
- Vicksburg's Bicycle Friendly Plans
- Protected Bike Lanes: Engineering Considerations
- Bicycling: MDOT's Plans & Actions
- KRVT: Making Connections
- Bicycling's Role in Community Building
- Q&A



Welcome and Overview

Welcome, on behalf of your hosts

BFK: Bike Friendly Kalamazoo

**KATS: Kalamazoo Area Transportation
Study**

A part of Kalamazoo Bike Week for many years

Many topics & speakers – 70+ slides(!)

Please hold questions until end

Bike Friendly Kalamazoo

Mission: *Helping to make our greater community even more bicycle friendly*

Since 2011: Network of volunteers spanning greater Kalamazoo (i.e., KATS metropolitan planning organization)

Since 2018: A 501c3 Michigan non-profit – helping to institutionalize progress

Since 2019: Kalamazoo (Area) Bike Week – overall organizer...working with great volunteers, organizations & sponsors!

Quick BFK Updates

- **Cross Jurisdictional Bicycle Program Steering Committee – meeting quarterly starting June 24**
 - *Bike visibility campaign*
 - *Certification for cycling instructors*
 - *Public service messaging*
 - *Others that emerge – please ask for more information or to volunteer*
- **BFK's Bike-Booster Mini-Grants Program**
- **BFK's League Cycling Instructor Scholarship Program**

Agenda

- Welcome & Overview
- **KATS Update**
 - Megan Mickelson, Associate Planner,
Kalamazoo Area Transportation Study



KATS

www.katsmpo.org



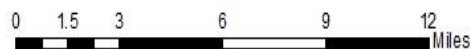
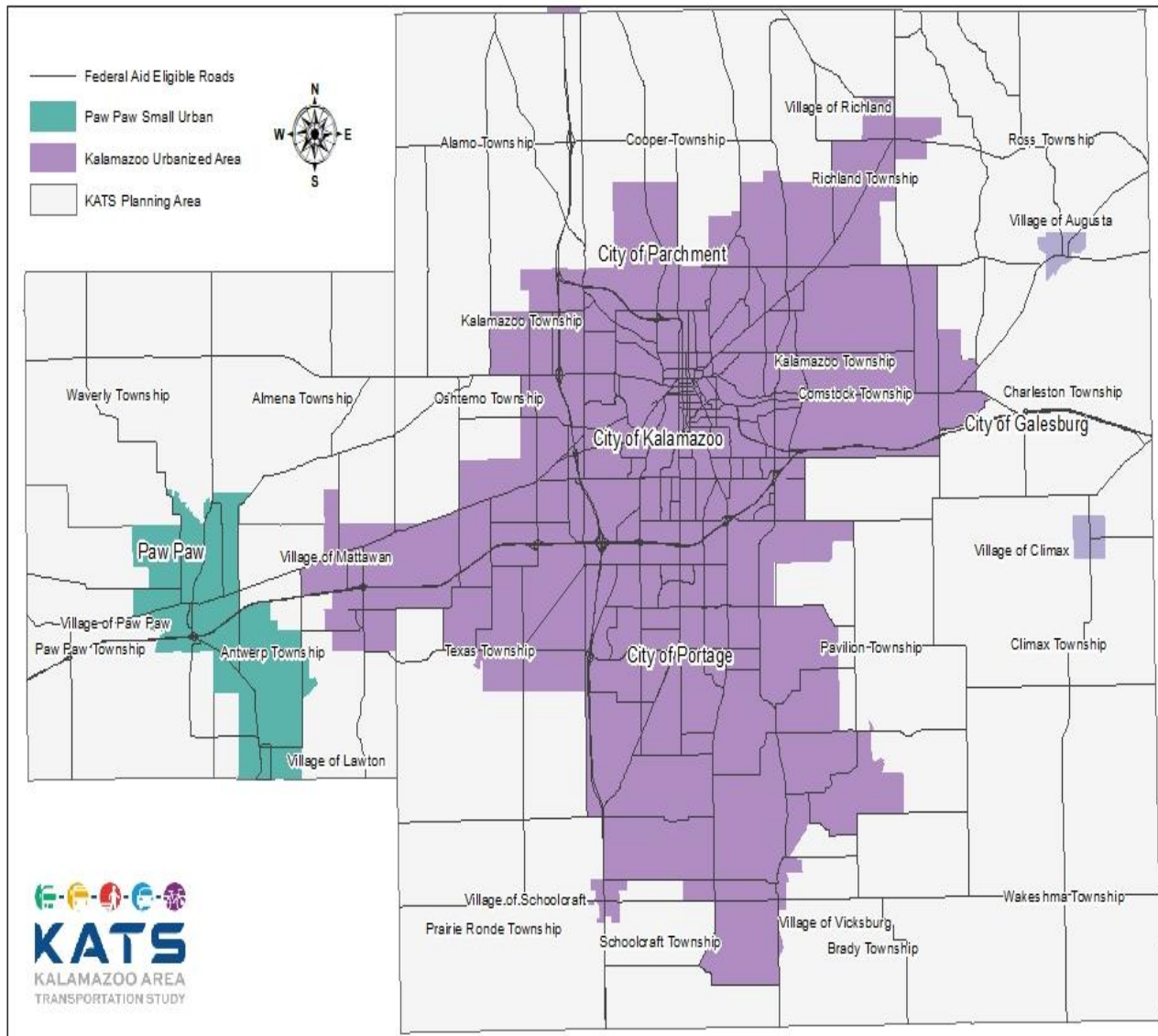
KATS

KALAMAZOO AREA
TRANSPORTATION STUDY

Planning for Transportation

- ▶ KATS provides funding to state and local agencies that plan to enhance and connect the pedestrian, greenway, road and transit facilities throughout the planning area for the Kalamazoo Area Transportation Study (KATS).

KATS Planning Area



Source: Michigan Geographic Data Library
Kalamazoo Area Transportation Study

March 2019

Projects KATS Helps Fund



Metro Transit

Sprinkle Rd. Roundabout



KRVT



Bike Facilities

Be Involved!

Learn about transportation related events and documents that you can be involved in on our Facebook page >
www.facebook.com/Kalamazoo-Area-Transportation-Study-206762346065960/



KATS

KALAMAZOO AREA
TRANSPORTATION STUDY

Agenda

- Welcome & Overview
- KATS Update
- **Vicksburg's Bike Friendly Plans**
 - Bill Adams, President, Village of Vicksburg



Vicksburg's Bike Friendly Plans:

Bike Friendly Community Building Blocks

Bill Adams
Village President
May 13, 2020

Vicksburg: Embraces Bicycling, Welcomes Cyclists

- Community Survey Support
- 2019 - Inaugural Fall Bike Celebration
 - Vicksburg Quail Trail Routes
 - Shipshewana Route
 - Scotts Mill Pond & Climax Routes
 - BFK's Bike Art Prize
 - Ice Cream Social
 - Raised \$18,000 From Businesses and Interested Parties: All Toward Charitable Organizations & Community Building

Vicksburg As A Great Cycling Destination

- 2020 Fall Bike Celebration Sept. 18-20
 - “Planning for the best, preparing for the worst & making the most of what comes”
 - Aiming at Long-Term Growth As Regional Tourist Destination & Element of Community-Building
 - Launching from Vicksburg Historic Village
 - Shishewana Century Ride & Other Great Routes: Quilt Trail, Climax, Scotts Mill, Family
 - Schlitz Creek “Bikes & Bluegrass” Concert
 - BFK’s Bike Art Prize
 - Disc Golf Tournament
 - Will Move to 2021 If Needed

Infrastructure Projects

- Multi-Use Trail Connecting Vicksburg to Portage – Completed This Year
- East-West Multi-Use Trail to Schoolcraft From Vicksburg Under Discussion and Planning
- \$60-100M Mill Project Under Construction
- Planning Begun for Multi-Use Trail to Mill Project

Vicksburg Recreation Trail - Earlier This Week



Getting Ready



Fresh Asphalt – Smooth As Silk - Ready For Foliage ...



... and Scenic Views



Richardson St. Enhancement



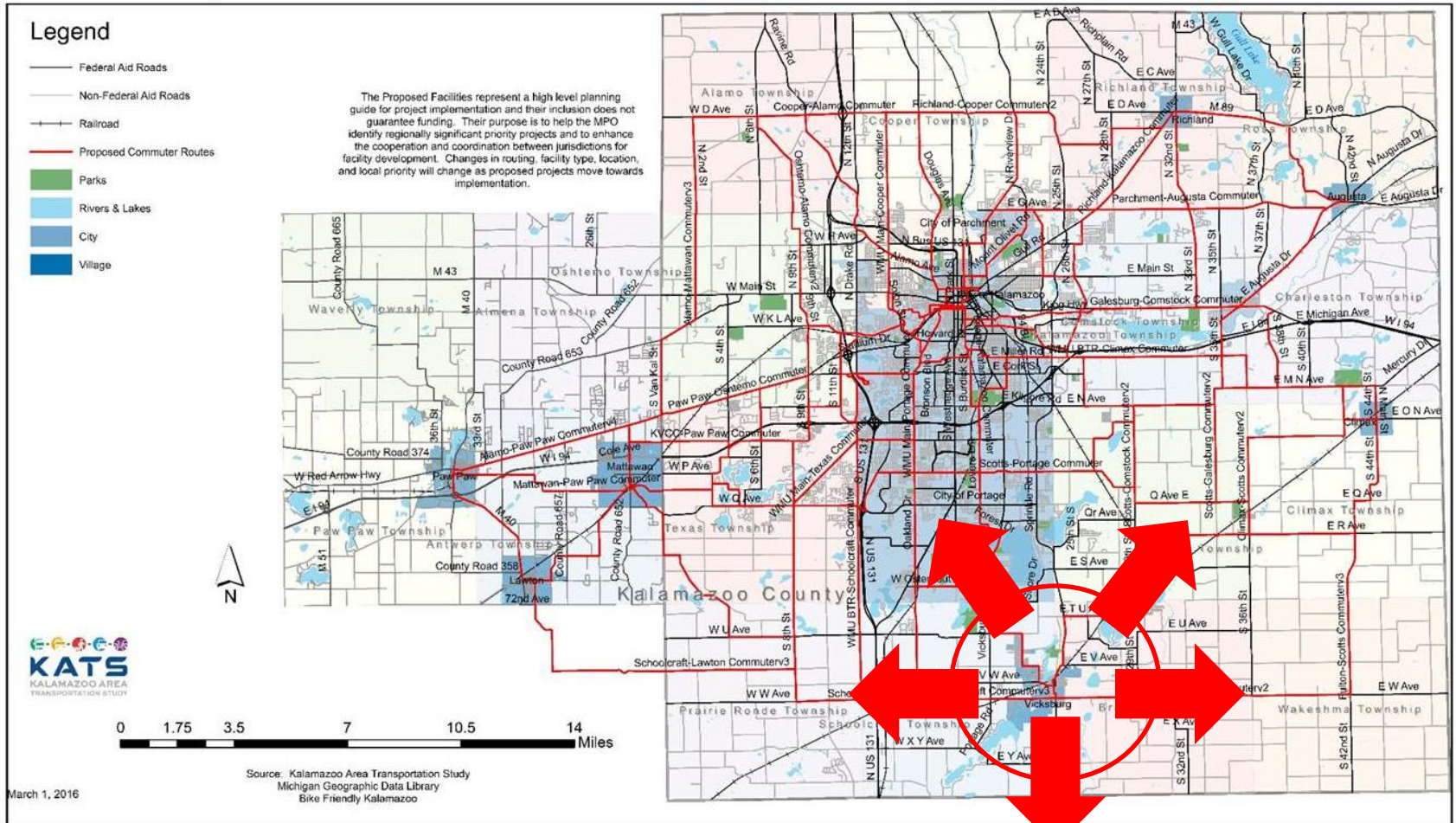
Vicksburg – Getting Ready for SW Michigan Bikeway

- Distinctive Uniform Regional Direction-Destination-Distance Oriented Wayfinding Signage



Vicksburg: Gateway to Great Cycling in Regional Network!

Map 7: Proposed Bike Commuter Routes



Agenda

- Welcome & Overview
- KATS Update
- Vicksburg's Bike Friendly Plans
- **Protected Bike Lanes: Engineering Considerations**
 - James Baker, Public Services Director & City Engineer, City of Kalamazoo



Protected Bike Lanes – Engineering Considerations

James J. Baker, PE, City of Kalamazoo Public Services
Director & City Engineer

Examples

One-Way Protected Cycle Tracks



Examples

CYCLE TRACKS



Examples

Raised Cycle Track

Cambridge, MA



Source: NACTO

Examples



Two-way Cycle Track
New York, NY



One -Way Protected Cycle Tracks

Protected Bike Lanes – Engineering Considerations

- Property ownership and property needs
- Right of way attributes
- Topography and vertical grade
- Intersections and traffic conflicts
- Surface drainage and storm water flow
- Utility conflicts, above ground and underground utilities
- Environmental and historical clearances (approvals)
- Maintenance and operations
- Cost

Property Ownership & Property Needs

- Easements & land acquisition
- Width/area needed for the protected bike lane is much larger for construction
- Property controls all, there is no project without property
- Function and use of the facility is often a consideration for a property owner when deciding to grant or deny an easement
 - Business that can attract customers with increased bike traffic
 - Rural residential areas that wish to keep property secluded
 - Property owners must understand maintenance requirements

Right of Way Attributes

- Existing curb lawn area with mature closed canopy street trees
- Existing curb/gutter and sidewalk
- On street parking (existing or proposed)
- Transit use and bus stops, bus shelters
- Urban setting; sidewalk café, and existing business uses
- Existing setbacks and changes to quality of life following construction

Topography & Vertical Grade

- Protected bike lanes are most often constructed as mixed use to allow for shared use with pedestrians
- Mixed use must follow ADA construction standards
- Maximum cross slope of 2%
- Maximum running slope of 2% at crossings and intersections
- Maximum running slope of 8%
- Significant earth work excavation, fill, grading and even retaining walls are required
- This becomes an iteration with property control requirements

Intersections & Traffic Conflicts

- Traffic control varies with use and placement (cycle track or mixed use)
- Two – 5 Ft bike lanes can be accessed easier than one – 10 Ft protected bike lane; what additional conflicts are created?
- Railroad grade crossings; sidewalks, bike lanes, mixed use all have different requirements – DSTR required
- Culvert or Bridge Crossings

Surface Drainage & Storm Water Flow

- Construction of new facilities cannot impede the natural or existing flow of water
- Construction of new facilities cannot increase storm water runoff onto private property
- Changes to curb and gutter location requires excavating and rerouting storm sewer inlet connections and corresponding pipe network – this can become very involved

Utility Conflicts

- Above grade features; fire hydrants, MMUTCD signage, power and telephone poles and appurtenances, **trees**, mailboxes,...
- Below grade features; natural gas mains and services, underground electric, fiber optic, phone and communication, storm and sanitary sewer, drinking water mains and services,...
- Utilities or proposed protected bike lane must be relocated around conflicts, this is a project cost, not a cost shouldered by the owning utility

Environmental & Historical

- Wetland, flood plain, flood way and flood zone (all separate different items)
- Tree protections – City of Kalamazoo Tree Board
- Protected or endangered species
- Historic districts (local, state or federal level)
 - No removals of mature trees
 - No alterations to grades or retaining walls

Maintenance & Operations

- Type of facility not discussed previously – these can vary
- All maintenance needs to be considered; winter maintenance, pavement restoration and replacement, signs & markings, sweeping and debris, litter, leaves
- Operational considerations; who enforces closures and notification, errant usage, routine inspections and record keeping
- Facility cannot interfere with the maintenance of the traveled way on public streets
- Snow storage requirements (land/property) compared to maintenance costs to haul out and remove snow during winter maintenance operations

Cost Considerations

- Type of facility has not been detailed; these facilities can vary widely, however, these eight attributes must always be considered
- Think of a Rubik's cube
- Every design decision impacts cost
- Every design decision impacts previous/future decisions which impact cost
- Using 2015 – 2018 average unit costs protected bike lanes compare to legal on street bike lanes (5 Ft width) as follows:
 - Two - 5 Ft wide bike lanes created via a 4-lane to 3-lane conversion
\$120,000 per mile
 - One - 10 Ft wide protected bike lane created within the ROW
\$2,400,000 per mile

Agenda

- Welcome & Overview
- KATS Update
- Vicksburg's Bike Friendly Plans
- Protected Bike Lanes: Engineering Considerations
- **Bicycling: MDOT's Plans & Actions**
 - Brian Sanada, Transportation Planner,
Michigan Department of Transportation





**Brian Sanada – Transportation
Planner
MDOT Southwest Region**

May 13, 2020

[Glossary](#)[Contact Us](#)[Translate](#)[ADA Accessibility](#)[Search](#)

LEARN

The 2045 Statewide Plan



UNDERSTAND

Long Range Planning



ENGAGE

Public Outreach Program



FIND

Information & Resources



CONFIRM

Get the FAQs



2045 State Long-Range Transportation Plan

A vibrant multimodal transportation system is vital to Michigan's future economic viability and competitiveness. Michigan's geography, manufacturing prowess, and outstanding higher education institutions position our state to lead in transportation innovation... a transportation system that will support improved safety, infrastructure conditions, system reliability and drive statewide economic investments.

[Learn more](#)



Michigan Mobility 2045 Vision

*In 2045, Michigan's mobility network is **safe**, **efficient**, **future-driven**, and **adaptable**. This interconnected **multimodal** system is **people-focused**, **equitable**, **reliable**, **convenient** for all users and enriches Michigan's **economic and societal vitality**.*

*Through **collaboration and innovation**, Michigan will deliver a **well-maintained and sustainably-funded** network where strategic investments are made in **mobility options** that **improve quality of life**, **support public health**, and **promote resiliency**.*

[Glossary](#)[Contact Us](#)[Translate](#)[ADA Accessibility](#)[Search](#)

LEARN

The 2045 Statewide Plan



UNDERSTAND

Long Range Planning



ENGAGE

Public Outreach Program



FIND

Information & Resources



CONFIRM

Get the FAQs



ENGAGE/

Public & Stakeholder Participation Plan

MDOT has created a Public & Stakeholder Participation Plan (PSPP) for Phase I (visioning) and Phase II (plan development) of the Michigan Mobility 2045 state long-range transportation planning process. The PSPP ensures that extensive efforts will be made to gather public and stakeholder input, including views on freight, rail, transit, passenger, aviation, bicycle, pedestrian, highway, and other transportation issues important to Michigan's future. The PSPP also shows how public engagement will take place, how the public can provide ideas for making the plan better, and ways to ask questions about the plan.



[View PDF](#)

Key elements of the plan include:

- The use of innovative technology that allows MDOT to extend outreach to a larger and more diverse group of Michigan residents in developing MM 2045.
- An attitudes and perceptions survey to ensure the needs and priorities of a representative sample of Michigan residents are considered.
- Scenario planning to present transportation situations to the public in a realistic context to help determine a long-term vision for transportation in Michigan.
- Meaningful and collaborative public engagement, including giving targeted consideration and attention to vulnerable environmental justice populations, marginalized communities and tribal governments.

Public & Stakeholder Participation Plan

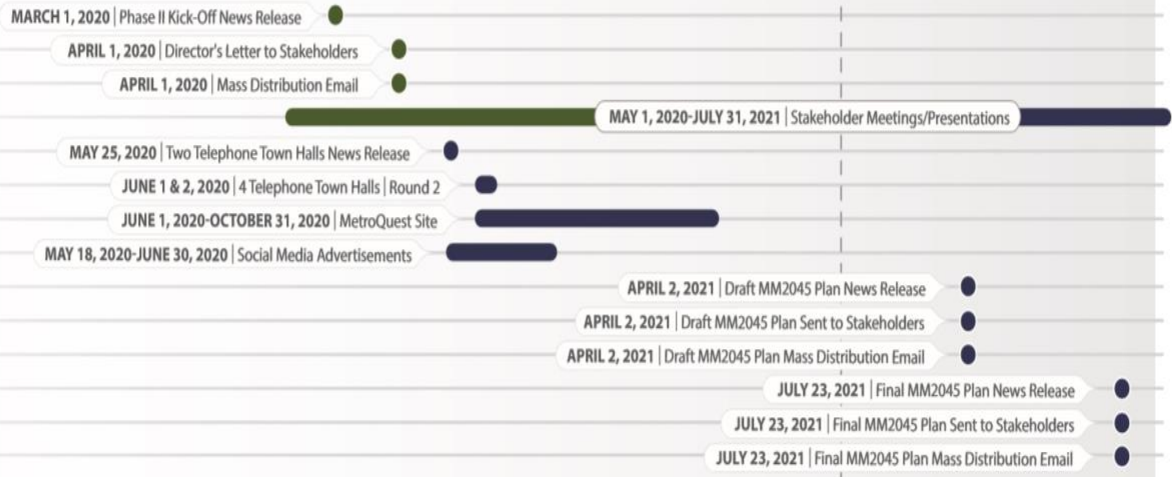


ROUND 1 | VISIONING | MAY 1, 2018 - JUNE 30, 2019



MAY 1, 2018

JULY 31, 2021



ROUND 2 | PLAN DEVELOPMENT* | MARCH 1, 2020-APRIL 2, 2021

ROUND 3

DRAFT & FINAL SLRTP
 APRIL 2, 2021-JULY 31, 2021

Phase I – Visioning

January – April 2019

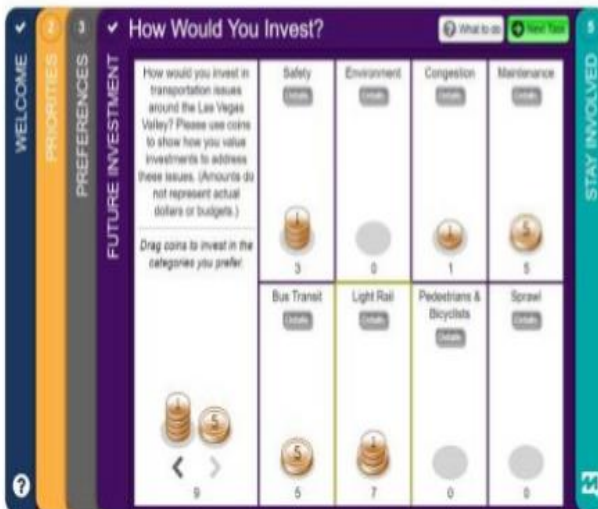
Tradeoffs



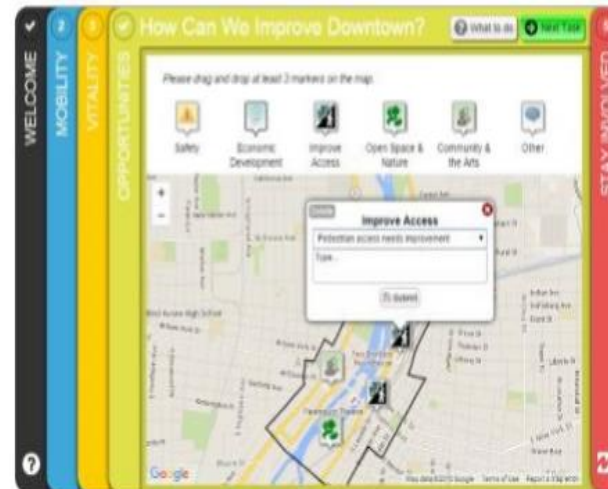
Priority Ranking



Budget Allocation



Map Marker



Phase II – Plan Development

Summer 2019 – July 2021

Statewide Active Transportation Plan

- Task Lead – Josh Debruyn
- Preliminary active transportation scope includes:
 - Objectives & Goals
 - Performance Measures, Funding, & Financing
 - Existing Conditions & Trends
 - Planned Facilities, Bikeways, & Routes
 - Public & Stakeholder Outreach
 - Integration with MM2045



Integration = Informed Process to Drive Project Level Decisions

REVISED 2020-2024 FIVE-YEAR TRANSPORTATION PROGRAM



SOUTHWEST REGION									
BRIDGE - PRESERVATION									
COUNTY	ROUTE (COMMON NAME)	LOCATION	TYPE OF WORK	LENGTH	2020	2021	2022	2023	2024
BERRIEN	I-94	WASHINGTON AVENUE OVER I-94	OVERLAY - EPOXY						
BERRIEN	I-94 EB	I-94 EASTBOUND OVER HENNESSY ROAD	OVERLAY - EPOXY					CON	
BERRIEN	I-94WB	I-94 WESTBOUND OVER HENNESSY ROAD	OVERLAY - EPOXY						CON
BRANCH	US-12 (West Chicago Street)	US-12 OVER COLDWATER RIVER	BRIDGE BARRIER RAILING REPLACE						CON
CALHOUN	I-69	GARFIELD ROAD OVER I-69	OVERLAY - DEEP						CON
CALHOUN	I-69	I-69 NB COLLECTOR OVER I-94	PAINTING COMPLETE						CON
CALHOUN	I-69	I-69 NB OVER I-94	PAINTING COMPLETE						CON
CALHOUN	I-69	I-69 SB COLLECTOR OVER I-94	PAINTING COMPLETE						CON
CALHOUN	I-69	I-69 SB OVER I-94	PAINTING COMPLETE						CON
CALHOUN	I-69	I-69 SOUTHBOUND OVER ST JOSEPH RIVER	OVERLAY - DEEP						CON
CALHOUN	I-69	J DRIVE NORTH OVER I-69	OVERLAY-DEEP						CON
CALHOUN	I-69	JACKSON ROAD OVER I-69	OVERLAY - DEEP						CON
CALHOUN	I-69	I-69 NORTHBOUND OVER ST JOSEPH RIVER	OVERLAY - DEEP						CON
CALHOUN	I-69	N DRIVE NORTH OVER I-69	OVERLAY - DEEP						CON
CALHOUN	I-94	I-194 AND M-66 SOUTHBOUND OVER I-94	PAINTING COMPLETE						CON
CALHOUN	I-94	I-194 AND M-66 NORTHBOUND OVER I-94	PAINTING COMPLETE						CON
CALHOUN	I-94	I-94 BUSINESS LOOP (MICHIGAN AVENUE) OVER I-94	BRIDGE BARRIER RAILING REPLACE						CON
CALHOUN	I-94 (Old US 27)	17 MILE ROAD OVER I-94	SUBSTRUCTURE REPLACEMENT						CON
CALHOUN	I-94 EB	I-94 EASTBOUND OVER RIVERSIDE DRIVE	OVERLAY - EPOXY						CON
CALHOUN	I-94 WB	I-94 WESTBOUND OVER RIVERSIDE DRIVE	OVERLAY - EPOXY						CON
CALHOUN	M-89	M-89 (WASHINGTON) OVER GTW RAILROAD AND KALAMAZOO RIVER	OVERLAY - EPOXY						CON
ST. JOSEPH	M-60	M-60 AND M-66 OVER NOTTAWA CREEK	OVERLAY - EPOXY						CON
VAN BUREN	I-94	32ND STREET (CR653) OVER I-94	OVERLAY - SHALLOW						CON

SOUTHWEST REGION									
BRIDGE - REPLACEMENT									
COUNTY	ROUTE (COMMON NAME)	LOCATION	TYPE OF WORK	LENGTH	2020	2021	2022	2023	2024
CALHOUN	I-94	I-194 OVER KALAMAZOO RIVER	BRIDGE REPLACEMENT						CON
KALAMAZOO	US-131 NB	US-131 NORTHBOUND OVER AMTRAK AND KL AVENUE	BRIDGE REPLACEMENT						CON
KALAMAZOO	US-131 SB	US-131 SOUTHBOUND OVER AMTRAK AND KL AVENUE	BRIDGE REPLACEMENT						CON
ST. JOSEPH	US-131 BR	US-131 BUSINESS ROUTE OVER ST JOSEPH RIVER	DECK REPLACEMENT						CON

SOUTHWEST REGION									
REPAIR AND REBUILD ROADS									
COUNTY	ROUTE (COMMON NAME)	LOCATION	TYPE OF WORK	LENGTH	2020	2021	2022	2023	2024
BERRIEN	M-51	US-12 EASTBOUND OVER M-51	BRIDGE REMOVAL						CON
BERRIEN	M-51	US-12 WESTBOUND OVER M-51	BRIDGE REMOVAL						CON
BERRIEN	I-94	TERRITORIAL ROAD OVER I-94	BRIDGE REPLACEMENT						CON
BERRIEN	I-94 EB	I-94 EASTBOUND OVER PIPESTONE ROAD	BRIDGE REPLACEMENT						CON
BERRIEN	I-94 WB	I-94 WESTBOUND OVER PIPESTONE ROAD	BRIDGE REPLACEMENT						CON

EPE - Study/Environmental PF - Preliminary Engineering/Design PE-B - Preliminary Engineering/Design for Bridges
 UTI - Utility work ROW - Right of way/Real Estate CON - Construction

 Bonded Projects New Projects

REVISED 2020-2024 FIVE-YEAR TRANSPORTATION PROGRAM

SOUTHWEST REGION									
REPAIR AND REBUILD ROADS									
COUNTY	ROUTE (COMMON NAME)	LOCATION	TYPE OF WORK	LENGTH	2020	2021	2022	2023	2024
BERRIEN	I-94	I-94 OVER YORE AND STOEFFER DRAIN	CULVERT REPLACEMENT						CON
KALAMAZOO	I-94	KILGORE ROAD OVER I-94	BRIDGE REMOVAL						CON
KALAMAZOO	I-94	I-94 OVER PORTAGE ROAD	BRIDGE REPLACEMENT						CON
BERRIEN	I-94	HIGHLAND ROAD OVER I-94	BRIDGE REMOVAL						CON
BERRIEN	I-94 EB	I-94 BUSINESS LOOP (EASTBOUND) (MAIN) OVER I-94	BRIDGE REMOVAL						CON
BERRIEN	I-94	BRITAIN AVENUE TO I-196	RECONSTRUCTION	5.415					CON
BERRIEN	I-94	I-94 BUSINESS LOOP (EXIT 23) TO THE ST JOSEPH RIVER	RECONSTRUCTION	4.515					CON
BERRIEN	I-94	I-94 OVER TRIB TO HICKORY CREEK	MISCELLANEOUS BRIDGE CSM						CON
BERRIEN	I-94	ST. JOSEPH RIVER TO BRITAIN AVENUE	RECONSTRUCTION	4.086					CON
BERRIEN	I-94 EB	I-94 EASTBOUND OVER CSX RAILROAD	OVERLAY - DEEP						CON
BERRIEN	I-94 EB	I-94 EASTBOUND OVER I-94 BUSINESS LOOP (LAKESHORE DRIVE)	BRIDGE REPLACEMENT						CON
BERRIEN	I-94 EB	I-94 EASTBOUND OVER LINCOLN AVENUE	OVERLAY - SHALLOW						CON
BERRIEN	I-94 EB	SOUTHBOUND US-31 AND EASTBOUND I-94 BL OVER I-94	NEW STRUCTURE ON RELOCATED ROUTE						CON
BERRIEN	I-94 WB	I-196 TO 0.7 MILES WEST OF M-140	ROAD REHABILITATION	5.375					CON
BERRIEN	I-94 WB	I-94 WESTBOUND OVER CSX RAILROAD	OVERLAY - DEEP						CON
BERRIEN	I-94 WB	I-94 WESTBOUND OVER I-94 BUSINESS LOOP (LAKESHORE DRIVE)	BRIDGE REPLACEMENT						CON
BERRIEN	I-94 WB	I-94 WESTBOUND OVER LINCOLN AVENUE	OVERLAY - SHALLOW						CON
BERRIEN	I-94 WB	I-94 WESTBOUND RAMP B OVER CSX RAILROAD	DECK REPLACEMENT						CON
BERRIEN	I-94 WB	NORTHBOUND US-31 AND WESTBOUND I-94 BL OVER I-94	NEW STRUCTURE ON RELOCATED ROUTE						CON
BERRIEN	M-139	OVER BUCKHORN CREEK, NORTH OF ROCKY WEED ROAD	RECONSTRUCTION	0.191					CON
BERRIEN	M-51	CHESTNUT LANE TO M-60 BUSINESS ROUTE	RECONSTRUCTION	3.543					CON
BERRIEN	US-12	0.8 MILES WEST OF DAYTON LAKE ROAD to M-139	ROAD REHABILITATION	8.574					CON
BERRIEN	US-12	DAYTON LAKE ROAD TO MAYFLOWER ROAD	ROAD REHABILITATION	6.854					CON
BERRIEN	US-12	INDIANA/MICHIGAN STATE LINE TO MONROE STREET	ROAD REHABILITATION	3.141					CON
BERRIEN	US-31 NB	US-12 TO M-139	ROAD REHABILITATION	12.261					CON
BERRIEN	I-94	BENTON CENTER ROAD OVER I-94	OVERLAY - EPOXY						CON
BRANCH	US-12	US-12 BRIDGE OVER THE COLDWATER RIVER TO WEST OF WESTERN AVENUE	ROAD REHABILITATION	0.452					CON
CALHOUN	I-69	I-94 TO EATON COUNTY LINE	RECONSTRUCTION	9.552					CON
CALHOUN	I-94	HELMER ROAD TO 6 1/2 MILE ROAD	ROAD REHABILITATION	4.379					CON
CALHOUN	I-94BL	HELMER ROAD TO SOUTHBOUND I-94 ON-RAMP	ROAD REHABILITATION	2.916					CON
CALHOUN	I-94	I-94 UNDER CAPITAL AVENUE	BRIDGE REPLACEMENT						CON
CALHOUN	I-94	I-94 UNDER F DRIVE NORTH	MISCELLANEOUS BRIDGE REHABILITATION						CON
CALHOUN	I-94 EB	I-94 EASTBOUND OVER 6 1/2 MILE ROAD	BRIDGE REPLACEMENT						CON
CALHOUN	I-94 EB	I-94 EASTBOUND OVER 9 MILE ROAD	BRIDGE REPLACEMENT						CON
CALHOUN	I-94 EB	I-94 EASTBOUND OVER M-294 (BEADLE LAKE ROAD)	BRIDGE REPLACEMENT						CON
CALHOUN	I-94 EB	I-94 EASTBOUND OVER THE KALAMAZOO RIVER	BRIDGE REPLACEMENT						CON
CALHOUN	I-94 WB	I-94 WESTBOUND OVER 6 1/2 MILE ROAD	BRIDGE REPLACEMENT						CON
CALHOUN	I-94 WB	I-94 WESTBOUND OVER 9 MILE ROAD	BRIDGE REPLACEMENT						CON
CALHOUN	I-94 WB	I-94 WESTBOUND OVER M-294 (BEADLE LAKE ROAD)	BRIDGE REPLACEMENT						CON
CALHOUN	I-94 WB	I-94 WESTBOUND OVER THE KALAMAZOO RIVER	BRIDGE REPLACEMENT						CON
CALHOUN	M-199 (25 1/2 Mile Road)	27 MILE ROAD TO I-94	ROAD REHABILITATION	2.938					CON
CALHOUN	M-199 (East Michigan Avenue)	25 1/2 MILE ROAD TO I-94 BUSINESS LOOP (SUPERIOR STREET)	ROAD REHABILITATION	2.937					CON
CALHOUN	M-37	M-96 TO NORTH CITY LIMITS BATTLE CREEK	ROAD REHABILITATION	2.900					CON
CASS	M-51	NILES TO DOWAGAC	ROAD REHABILITATION	11.504					CON
CASS	M-60	M-60/US-12 INTERCHANGE TO END OF DIVIDED	ROAD REHABILITATION	3.555					CON
KALAMAZOO	I-94	EAST OF LOVERS LANE TO EAST OF PORTAGE ROAD	MAJOR WIDENING	1.248					CON
KALAMAZOO	I-94	EAST OF LOVERS LANE TO WEST OF SPRINKLE ROAD	MAJOR WIDENING	2.495					CON

EPE - Study/Environmental PF - Preliminary Engineering/Design PE-B - Preliminary Engineering/Design for Bridges
 UTI - Utility work ROW - Right of way/Real Estate CON - Construction

 Bonded Projects New Projects



ENGAGE

Follow the 2045 Plan

Find us on social media for updates



Tweets by @MichiganDOT



Michigan DOT ✓
@MichiganDOT

.@MDOT_MetroDet closing Maple Road under I-75 tomorrow for bridge beam setting in #OaklandCounty bit.ly/2zt5AGJ



♡ ↗ 32r



Michigan DOT ✓
@MichiganDOT

This week's Talking #Michigan Transportation podcast: Whether the federal government will provide any relief for transportation agencies in wake of declining fuel tax revenues because of the pandemic. Also discussed,

Thank You!

**Brian Sanada – Transportation Planner
MDOT Southwest Region**

sanadab1@Michigan.gov

Agenda

- Welcome & Overview
- KATS Update
- Vicksburg's Bike Friendly Plans
- Protected Bike Lanes: Engineering Considerations
- Bicycling: MDOT's Plans & Actions
- **KRVT: Making Connections**
 - **David Rachowicz, Director of Parks, Recreation & Expo Center, Kalamazoo County**



The Kalamazoo River Valley Trail



Kalamazoo River Valley Trail Map



Legend

- Trail
- On-Road Bike Lane
- Signed Bike and Pedestrian Routes
- Railway
- State Road
- Swimming Beach
- Camping
- Picnic
- Drinking Water
- Canoe Launch
- Restrooms
- Hospital
- School
- Playground

Downtown Kalamazoo Points of Interest

- Arcadia Creek Festival Place
- Bus Station
- Kalamazoo Valley Community College
- Kalamazoo Valley Museum
- Discover Kalamazoo
- Kalamazoo Public Library
- Kalamazoo Mall

Point-to-Point Distances

10th Street to Ravine Bike Lane	3.0 miles
10th Street to Westnedge	4.8 miles
10th Street to D Avenue	13.0 miles
10th Street to Galesburg (35th Street, end of trail)	14.1 miles
Comstock (River St.) to D Avenue	11.1 miles
Comstock (River St.) to Galesburg (35th St.)	4.9 Miles
Comstock (River St.) to Rose Park	3.5 Miles
Verburg Park Bridge to D Avenue	6.5 miles
Verburg Park Bridge to Galesburg (35th St.)	8.4 miles
Rose Park to D Avenue	7.8 miles
Rose Park to 10th Street	5.6 miles
River Oaks County Park to D Avenue	15.0 miles
River Oaks County Park to Markin Glen County Park	11.5 miles
Galesburg (35th St.) to Rose Park	8.5 miles
Galesburg (35th St.) to D Avenue	16.0 miles

- ### Trail Parking
- P1** **KRV Trail/Kal-Haven Trailhead:** Located on 10th St., two miles north of W. Main.
 - P2** **D Avenue:** A parking lot is located along the KRV Trail, just west of the Kalamazoo River.
 - P3** **Kalamazoo Nature Center:** Parking is located just inside the Kalamazoo Nature Center entrance.
 - P4** **Markin Glen County Park:** Markin Glen provides convenient access to the KRV Trail through the north end of the park near the fishing lake. There is a vehicle entry fee of \$5 per day or \$25 for an annual pass. The park gates are open 7 a.m. to sunset.
 - P5** **Parchment:** Parking is available along Commerce Lane near Mosel Ave.
 - P6** **Verburg Park:** Parking is available at the north end of the park at Paterson St. just west of Riverview Drive.
 - P7** **Jack Combs Trailway:** This parking lot is located behind 660 Gull St. along the river.
 - P8** **Rose Park Veterans Memorial:** Parking is available at the Southwest corner of E. Michigan Ave. and King Highway.
 - P9** **Moyers' Riverfront Park:** Parking is available near Homer Styrker Field toward the back of the park (gates are locked at sunset) and also along Mile St. near the Kalamazoo River.
 - P10** **King Highway:** Parking is available 1/2 mile west of River St. at the DNR Kalamazoo River access site.
 - P11** **Comstock:** Trail parking is available at both North and South Wenke Parks, located on King Highway just west of River St.
 - P12** **Comstock:** Located on the South side of the Kalamazoo River at River St., Merrill Park is connected by sidewalk to the KRV Trail.
 - P13** **River Oaks County Park:** The trail passes through River Oaks County Park and there is ample parking. The vehicle entry fee is \$5 per day or \$25 for an annual pass. Park gates are open 7 a.m. to sunset.

Nearby Trail Parking

P14 **Downtown Kalamazoo:** The Radisson and Arcadia parking ramps are located just a few blocks from the KRV Trail.



Presented in cooperation with
Kalamazoo River Valley TRAILWAY



A Private Public Partnership



PARKS FOUNDATION
KALAMAZOO COUNTY



Road
Commission
of Kalamazoo
County



Kalamazoo River Valley Trail

Future Development



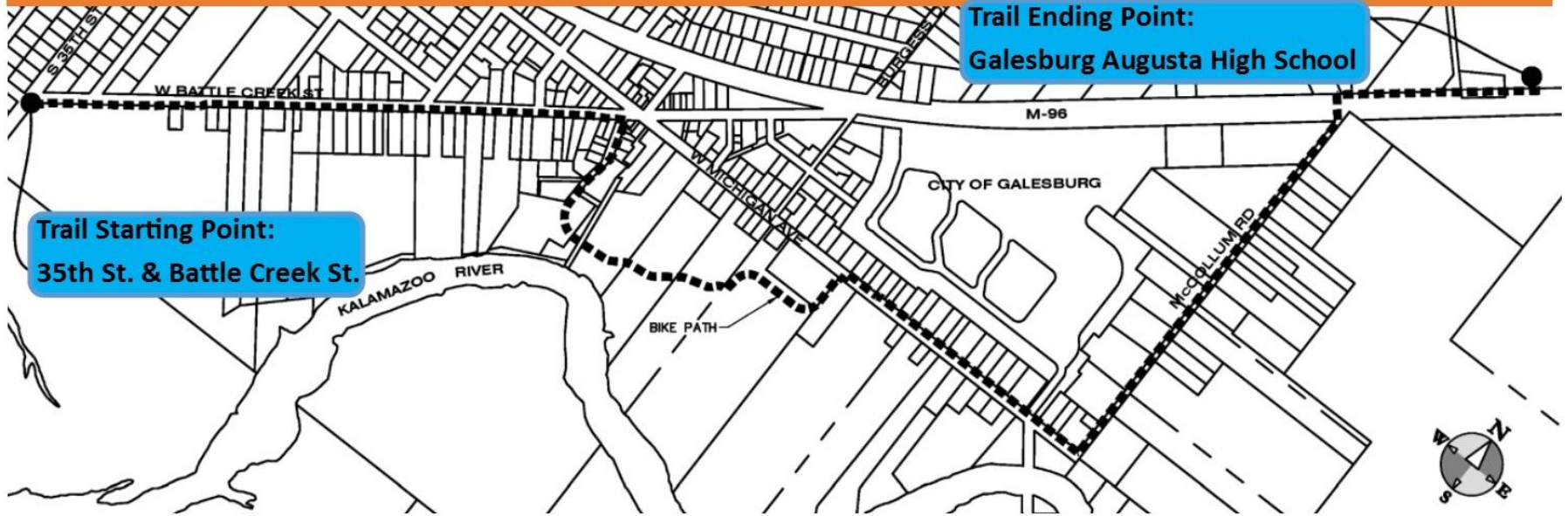
Seg 7A Budget

MDOT – TAP	\$640,000
MDNR – Trust Fund	\$300,000
Parks Foundation	
<u>\$910,000</u>	
Total Prelim Budget	
\$1,850,000	

- Existing Trail
- Current Project
- Future Trail

KRV Trail 35th Street/Galesburg to Galesburg Augusta High School to Fort Custer Recreation Area: 2.3 Miles

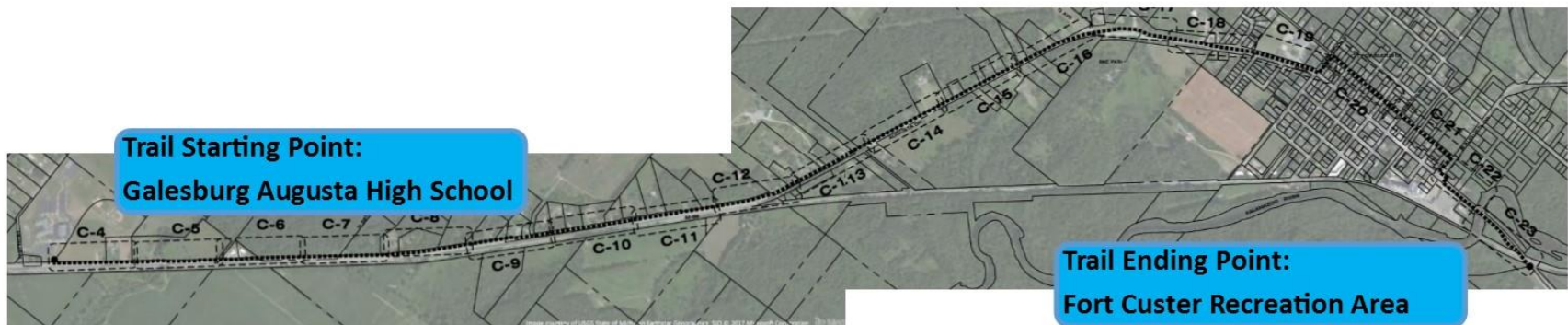
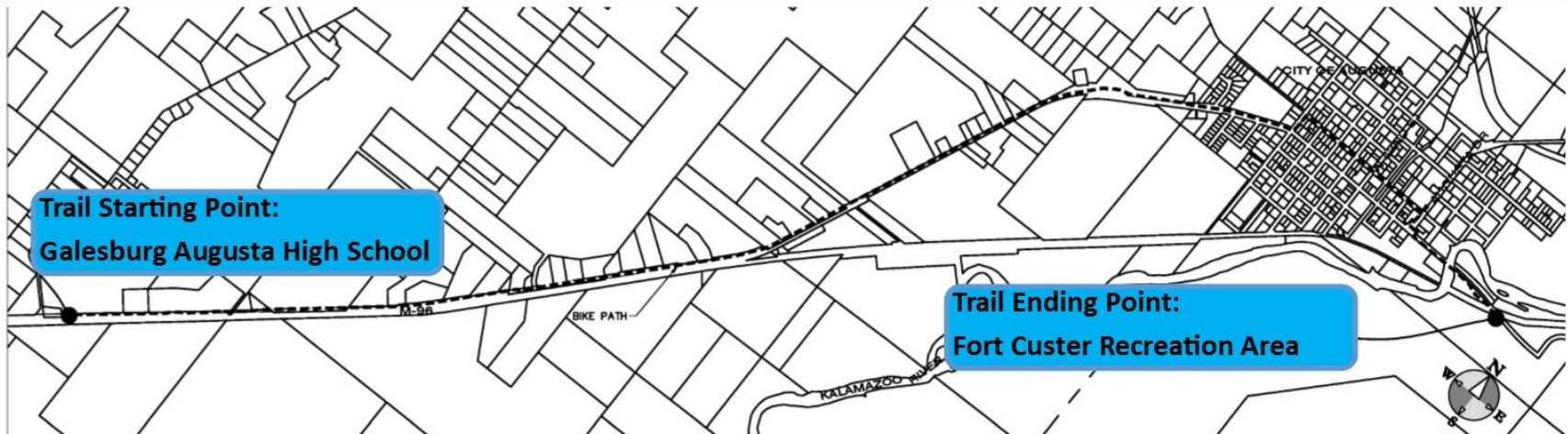
Construction 2019-2021



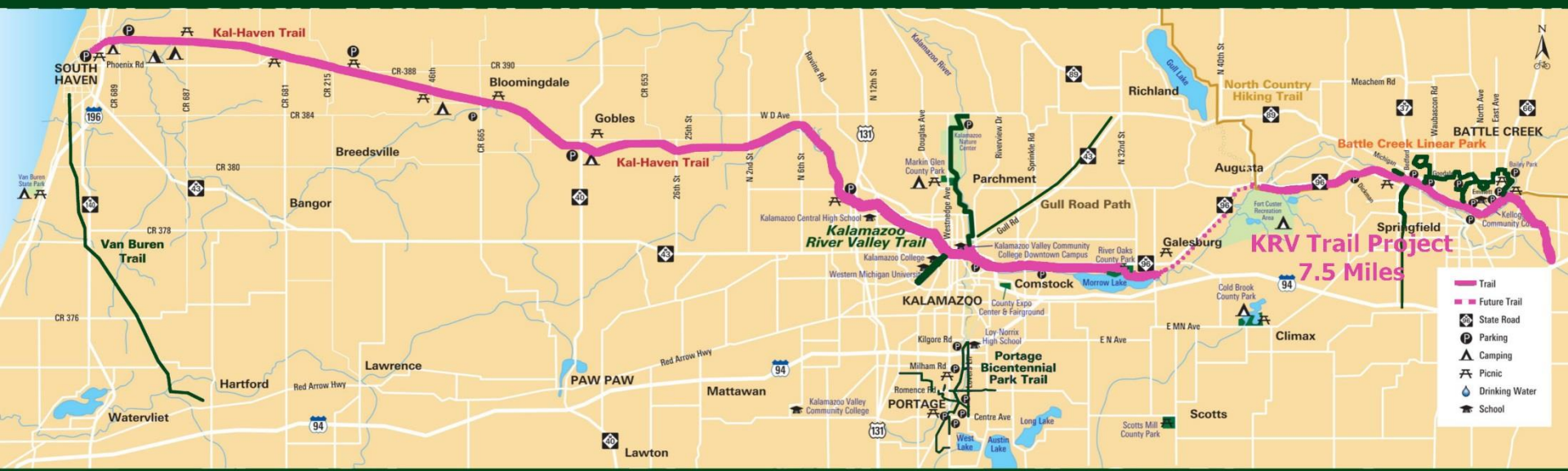
Campaign Connect Trail Project

KRV Trail Galesburg Augusta High School to Fort Custer Recreation Area: 4.5 Miles

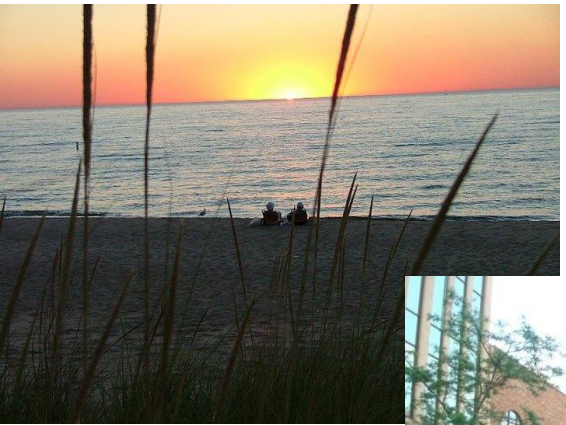
Construction 2021-2022



GREAT LAKE TO LAKE TRAIL - KRV TRAIL



7.5 Miles will connect 75.5 miles of the Great Lake to Lake Trail & 125 Miles of Regional Trail



The Kalamazoo River Valley Trail

**For more information on the
Kalamazoo River Valley Trail
visit:**

krvtrail.com

ParksFoundationKalamazoo.com

Agenda

- Welcome & Overview
- KATS Update
- Vicksburg's Bike Friendly Plans
- Protected Bike Lanes: Engineering Considerations
- Bicycling: MDOT's Plans & Actions
- KRVT: Making Connections
- **Bicycling's Impact on Community Building**
 - **Kathleen Hoyle, Director of Parks, Recreation and Senior Services, City of Portage**

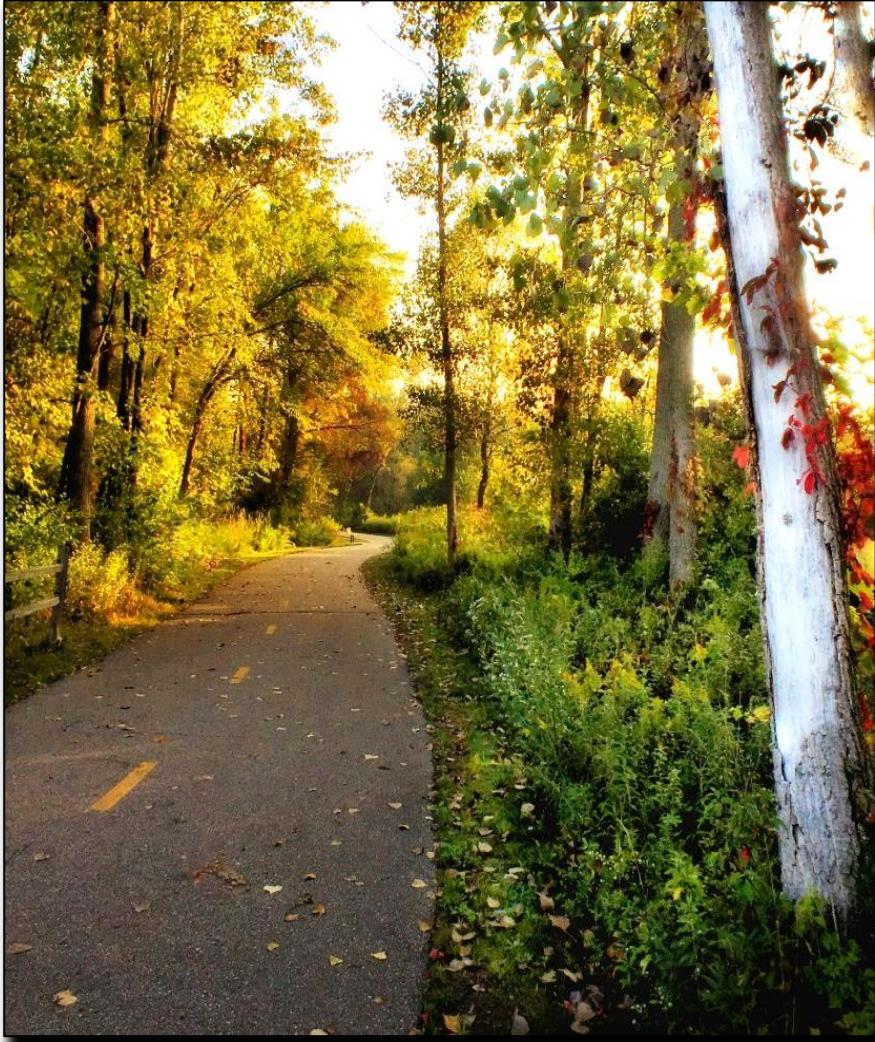


“Bicycling’s Impact on Community Building”



Kathleen Hoyle
Director, Parks, Recreation & Senior Citizen Services

Cycling Vision



Designing Cities to Support Active Living

- *Infrastructure*
- *Facilities*
- *Availability*
- *Business Support*
- *Community Support*
- *Programs & Education*

Infrastructure (Safe Routes)

FOCUS:

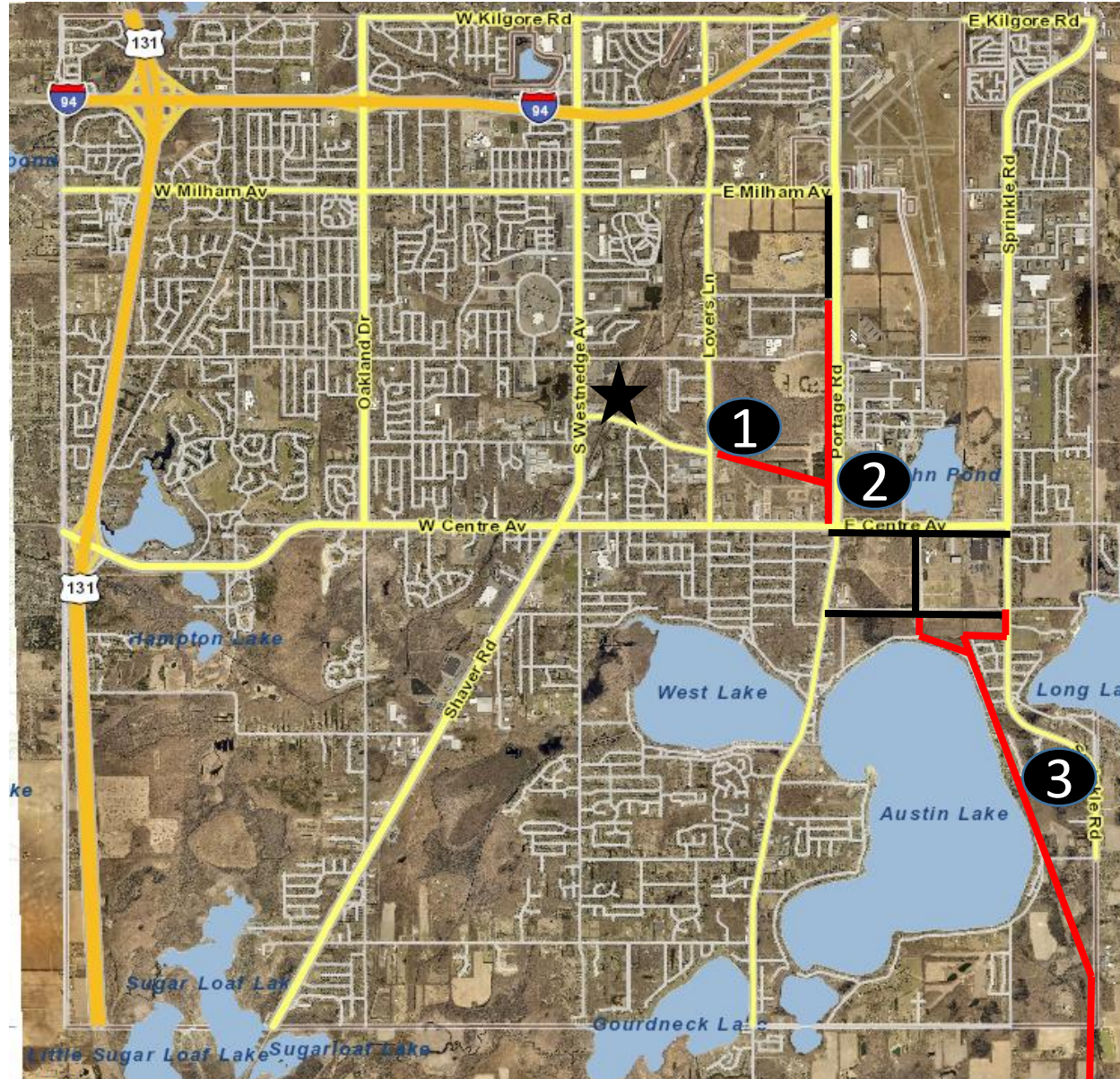
- Trails as a Pedestrian Transportation Network
- Combination of Non-motorized Trails and Bikeway Lanes
- Routes to Home, Work, Schools, Shopping & Parks
- Yellow Areas Need Connectivity
- Celery Flats is Non-Motorized Transportation Hub



Community Connections

Southeast Connection:

1. East Central Trailway
2. Portage Road Trailway
3. Austin Lake Trail



Facilities

Ridership Increases as Safe Routes are Developed

- Bike racks around the City
- Water bottle filling fountains
- Hand towels
- Bike repair stations
- Tire air stations
- Destinations
(parks, attractions, shopping)

University of California study noted that that if bicycling were made safer, the percentage of all trips made by bike in the US would rise from 8% to 40%.

Further, 44% of the 1,800 adults surveyed who did not own a bike said they would start riding at least once per week if they didn't have to worry about traffic.

YOUR BACKYARD IS BIGGER THAN YOU THINK

1,000 Acres. 18 Parks. One City.

Linked to the city's trail system, Eliason Nature Reserve features 123 acres of forest and wetland ecosystems along a paved trail, ideal for enjoying and exploring with family and friends.

PORTAGE
PARKS & RECREATION

Find your special place in the parks of Portage.
mypark.portage.gov

Availability

- Bike Shares (each area of the City)
- Bike Rental Options:
 - Tri-Bikes *(Balance, Cargo)*
 - Recumbent *(Back Issues)*
 - Surreys *(Families/Toddlers)*
 - Tandem *(Small Children)*



BUSINESS SUPPORT

MovePortage! Bike Friendly Business Program

- Business Advocates for Bicycling in the Community
- Offer Convenient, Secure Public Bike Parking
- Provide Water Bottle Filling
- Offer Incentives to Bike to Work (showers, lockers, other)
- Supports Local and State Bicycling Opportunities/Events



Community Support

Driver Acceptance of Cyclists

- Driving Change Program
- Encouraging More People to Cycle
 - Bike to Work Day
 - Bike to School Week
 - Public Bike Riding Events (i.e., Bike Westnedge)



Programs & Education

- Bike-opoly
- Scavenger Hunt
- Repair Workshops
- Bike Light & Helmet Give-away
- Obstacle Courses
- Pump Track (Lexington Green)
- Bike Patrol
- Bike Expeditions
- Historic Rides



CONSTRUCTED - 56 miles of bicycle lanes
- 20 miles of off-road trails


- 1.1 miles in 2020
- Plus 8.5 miles in 2020-2022



Upcoming.....

- Citizen Bicycle Advisory Committee Expansion
- Application Toward Silver/Gold Level Bike Friendly Community
- Continue Trail System Development:
 - **THIS YEAR:**
 - 1.1 mile trail along Portage Road between Centre Ave. and Ramona Ave.
 - **FUTURE:**
 - 2.5 mile Austin Lake 2.5 mile Trail between Zylman Ave. and south City Limit
 - 1.1 mile Romence Road extension east to Bishop Road and the east City Limit
 - 1.0 mile connection between Lovers Lane and Portage Road



Find your special place in the parks of Portage.
mypark.portagemi.gov |  PortageParksnRec

**YOUR BACKYARD
IS BIGGER
THAN YOU THINK**

1,000 Acres. 18 Parks. One City.

Thank you!

Agenda

- Welcome & Overview
- KATS Update
- Vicksburg's Bike Friendly Plans
- Protected Bike Lanes: Engineering Considerations
- Bicycling: MDOT's Plans & Actions
- KRVT: Making Connections
- Bicycling's Impact on Community Building
- Q&A



Thank You!

- Thanks ...
... to our speakers!
... to our communities
for all they are doing!
... to you for coming
today!

To learn more, please visit
www.bikefriendlykalamazoo.org

